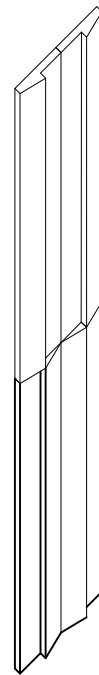
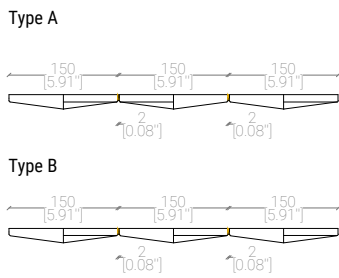
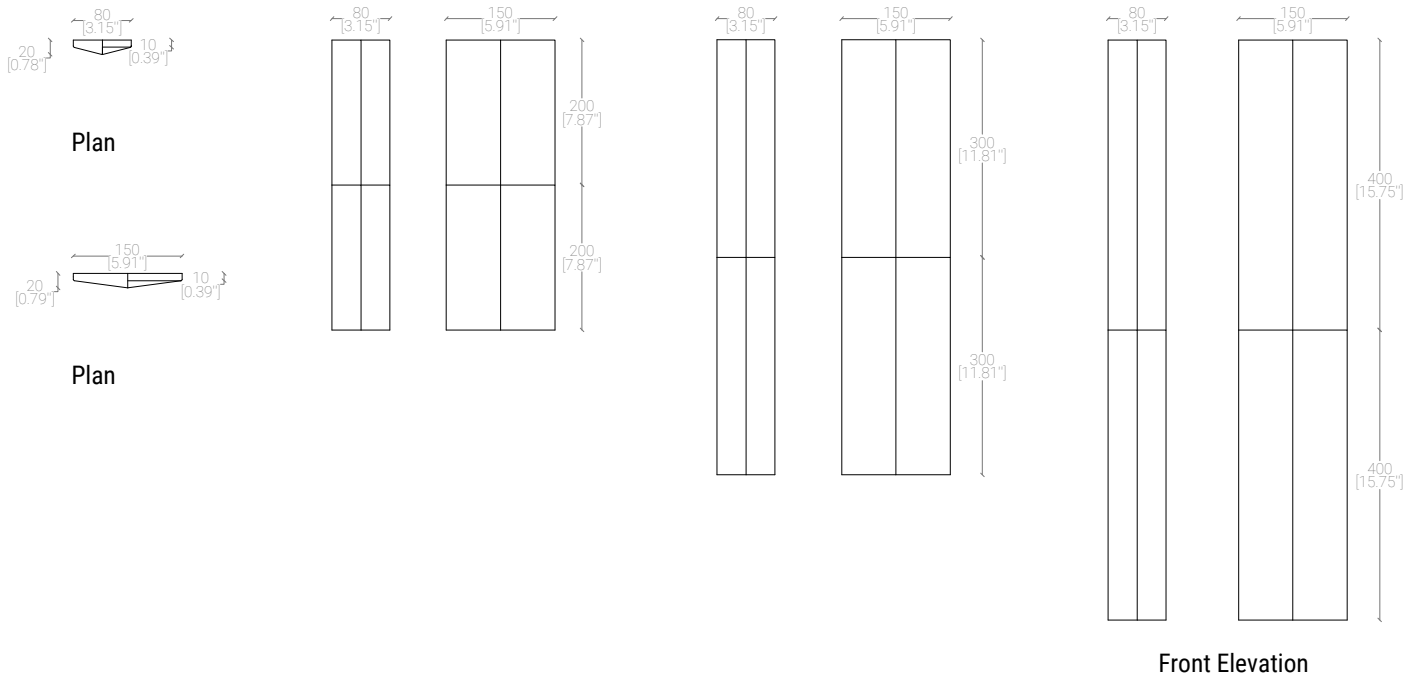
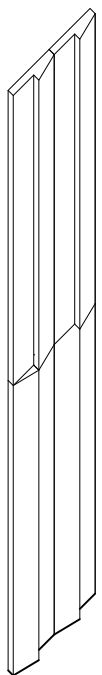


SIERRA TILE



Isometric Type A



Isometric Type B

Laying Pattern on Flat Surface

We suggest a 2mm Grout between each Sierra Tile

Please Note that Sierra Tile is assembled and composed by two smaller tiles jointed together.

NOTE:

The sides of the not visible edges may not be completely clean due to some enamel residues as a result of the firing process.



RANIERI
lava stone